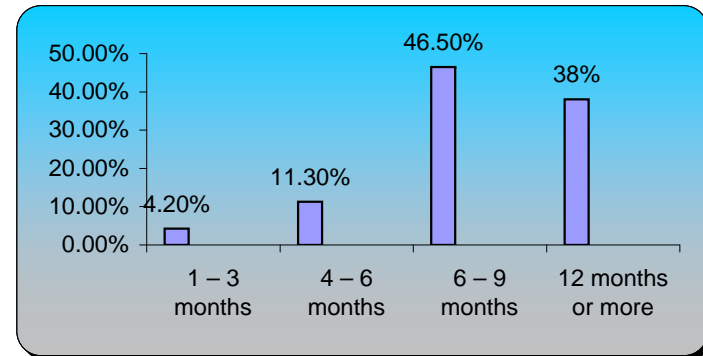


Learning Leadership Summit 2009

**Danger! Economic recovery ahead.**  
**Introductory Audience Polling**  
 Created: 7/16/2009 2:13 PM

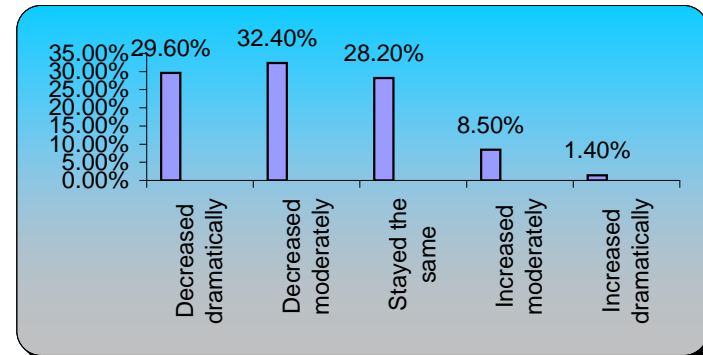
**1.) In thinking about the economic recovery, when do you think things will get significantly better for your business and/or your learning organization?**

	Responses	
1 – 3 months	3	4.23%
4 – 6 months	8	11.27%
6 – 9 months	33	46.48%
12 months or more	27	38.03%
<b>Totals</b>	<b>71</b>	<b>100%</b>



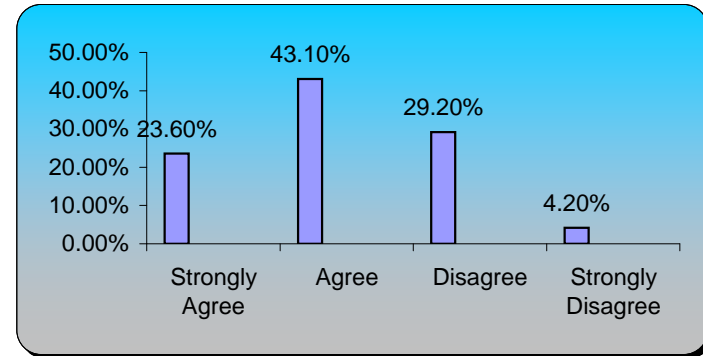
**2.) What has happened to the size of your learning organization in terms of budget and headcount during the recession?**

	Responses	
Decreased dramatically	21	29.58%
Decreased moderately	23	32.39%
Stayed the same	20	28.17%
Increased moderately	6	8.45%
Increased dramatically	1	1.41%
<b>Totals</b>	<b>71</b>	<b>100%</b>



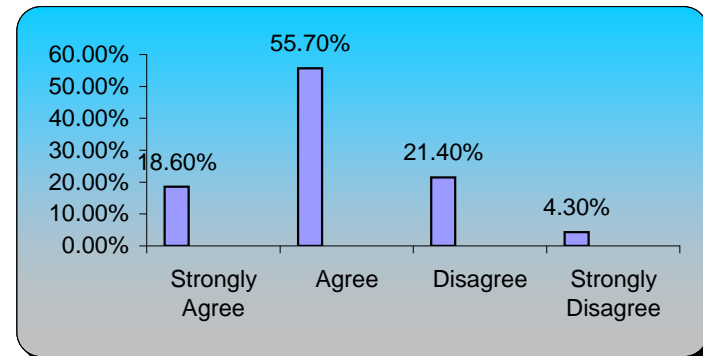
**3.) The recession forced my learning organization to radically rethink and change our priorities.**

	Responses	
Strongly Agree	17	23.61%
Agree	31	43.06%
Disagree	21	29.17%
Strongly Disagree	3	4.17%
<b>Totals</b>	<b>72</b>	<b>100%</b>



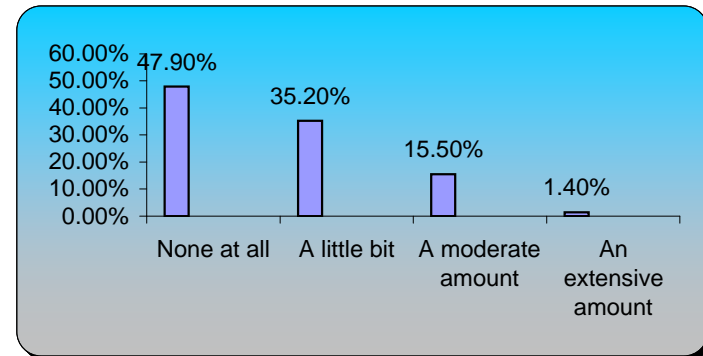
**4.) My learning group is currently seen as a strategic business partner within our organization.**

	Responses	
Strongly Agree	13	18.57%
Agree	39	55.71%
Disagree	15	21.43%
Strongly Disagree	3	4.29%
<b>Totals</b>	<b>70</b>	<b>100%</b>



**5.) How much time has your learning organization spent discussing strategy for the recovery?**

	<b>Responses</b>	
None at all	34	47.89%
A little bit	25	35.21%
A moderate amount	11	15.49%
An extensive amount	1	1.41%
<b>Totals</b>	<b>71</b>	<b>100%</b>



## Turning Results by Question

LLS July 2009

Created: 7/16/2009 2:13 PM

**1.) In thinking about the economic recovery, when do you think things will get significantly better for your business and/or your learning organization?**

1 – 3 months  
4 – 6 months  
6 – 9 months  
12 months or more

	<b>Responses (percent) (count)</b>	
	4.23%	3
	11.27%	8
	46.48%	33
	38.03%	27
<b>Totals</b>	100%	71

**2.) What has happened to the size of your learning organization in terms of budget and headcount during the recession?**

Decreased dramatically  
Decreased moderately  
Stayed the same  
Increased moderately  
Increased dramatically

	<b>Responses (percent) (count)</b>	
	29.58%	21
	32.39%	23
	28.17%	20
	8.45%	6
	1.41%	1
<b>Totals</b>	100%	71

**3.) The recession forced my learning organization to radically rethink and change our priorities.**

Strongly Agree  
Agree  
Disagree  
Strongly Disagree

	<b>Responses (percent) (count)</b>	
	23.61%	17
	43.06%	31
	29.17%	21
	4.17%	3
<b>Totals</b>	100%	72

**4.) My learning group is currently seen as a strategic business partner within our organization.**

Strongly Agree  
Agree  
Disagree  
Strongly Disagree

	<b>Responses (percent) (count)</b>	
	18.57%	13
	55.71%	39
	21.43%	15
	4.29%	3
<b>Totals</b>	100%	70

5.) How much time has your learning organization spent discussing strategy for the

None at all  
 A little bit  
 A moderate amount  
 An extensive amount

		Responses	
		(percent)	(count)
None at all		47.89%	34
A little bit		35.21%	25
A moderate amount		15.49%	11
An extensive amount		1.41%	1
<b>Totals</b>		100%	71